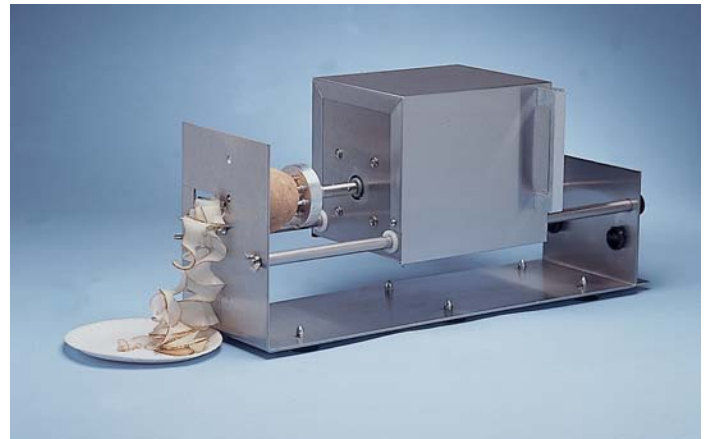
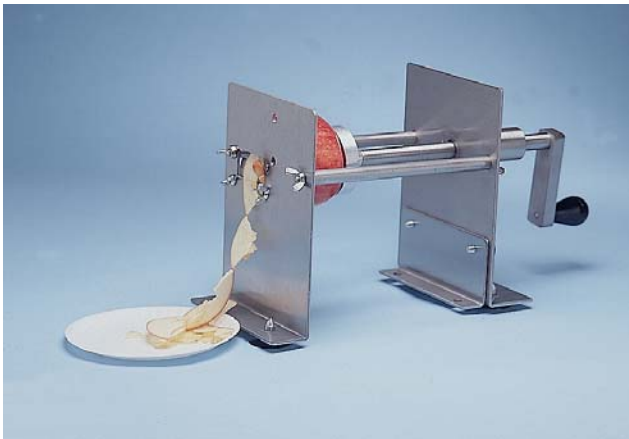


Part No. 82876
Revised Feb. 2010

SPIRAL SLICER

Instruction Manual
Model #5280 & 5280M



 **GOLD MEDAL**®







FUNFOOD EQUIPMENT & SUPPLIES

Cincinnati, OH 45241-4807 USA

DOSZE
EQUIPMENT

WWW.DOSZE.COM.CO

SAFETY PRECAUTIONS

	<p style="text-align: center;">⚠ DANGER</p> <p>Machine must be properly grounded to prevent electrical shock to personnel. Do not immerse the equipment in water. Keep cord and plug off the ground, and away from moisture. Always unplug the equipment before cleaning or servicing.</p>
	<p style="text-align: center;">⚠ WARNING</p> <p>Never put your fingers or any object into the shaver body (the goose-neck) while the motor is running. Serious injury may occur. <i>(Gold Medal Products does not assume any liability for injury due to careless handling and/or reckless operation of this equipment).</i></p>
	<p style="text-align: center;">⚠ WARNING</p> <p>ALWAYS wear safety glasses when servicing this equipment.</p>
	<p style="text-align: center;">⚠ WARNING</p> <p>Any alterations to this equipment will void the warranty and may cause a dangerous situation. NEVER make alterations to the equipment. Make sure all machine switches are in the off position before plugging the equipment into the receptacle.</p>
	<p style="text-align: center;">⚠ CAUTION</p> <p>Do NOT allow direct contact with this equipment and the general public when used in food service locations. Only personnel that are trained and familiar with the equipment should operate the equipment. Carefully read all installation instructions before operation.</p>
	<p style="text-align: center;">⚠ CAUTION</p> <p>This machine is NOT to be operated by minors. Minors are classified as anyone under the age of 18.</p>

NOTE

Improvements are always being made to Gold Medal Products equipment. This information may not be the latest available for your purposes. It is critical that you call Gold Medal Products technical service department at 1-800-543-0862 for any questions about machine operations, replacement parts, or any service questions.

5280 & 5280M SPIRAL SLICER

INSTALLATION INSTRUCTIONS

Inspection of Shipment:


Unpack all cartons and check thoroughly for any damage that may have occurred during transit. Damage claims should be filed immediately with the transportation company. Gold Medal Products is not responsible for damage that occurs in transit.

Setup:

Your new SPIRAL SLICER is completely assembled and tested at the factory. Remove all packing material and tape before starting operation.

Electrical Requirements (5280M):

Voltage for the 5280M is 120 volt, 60 cycle single phase. The machine will draw a maximum of 15 amps. Your electrician must finish sufficient current for the proper operation of your machine. We recommend this machine be on a dedicated and protected circuit line.

	⚠ DANGER
	Machine must be properly grounded to prevent shock in case of electrical problems. Wall receptacle must be wired as shown on the receptacle. Failure to wire properly will void the warranty and can result in damage to motors, elements, relay, lights, etc.

The **5280M** has a current draw of 15 amps

Your electrician must furnish sufficient power for proper machine operation. We recommend this slicer be on a dedicated and protected circuit. Failure to wire properly will void the warranty and may result in damage to the machine.

It is Gold Medal Products Company's recommendation that this machine be plugged directly into a wall outlet. The use of extension cords is not recommended due to safety concerns, and may cause sacrificed and/or reduced performance.

Spiral Slicer Operation Instructions

1. The spiral slicer kit contains (3) slicing blades, (2) shredding blades, and (1) slicer pin weldment.

The slicing blades are used as follows:

- a. A thin slicing blade for ribbon fries or Saratoga swirls stamped 'T'. This blade has a slight bend in it and will make slices approximately 1/8 inch thick. Use this blade with the slicer pin to make ribbon fries or alone to make Saratoga swirls.
- b. A medium slicing blade, stamped 'M'. This blade has a slight bend in it and will make slices approximately 3/16 inch thick. Use this blade with the medium shredding blade and slicer pin to make "hash brown" type continuous strands for hash browns or "spider web" potato pancakes.
- c. A coarse slicing blade, stamped 'C'. This blade has a 12 degree bend and will make slices of 1/4 inch. This blade has already been installed in the unit. This blade along with the coarse shredding blade (also installed) and slicer pin (also installed) are used to make spiral fries. Or use this blade and slicer pin alone to make the "Exploding Onion".

* Any of the slicing may be used alone.

The (2) shredding blades are used as follows:

- d. Medium shredding blade. The 10 cutting teeth identify this blade. Use with medium slicing blade to make items listed in 1b.
- e. Coarse shredding blade. The 5 cutting teeth identify this blade. This blade is installed in the unit and is used with the coarse slicing blade to make spiral fries.

** The shredding blades must be used with a slicing blade.

*** The slicer pin weldment is always used except for making Saratoga Swirls

2. Changing blades in the slicer.

- a. The slicing blade is secured with flange nuts and the shredding blade is secured by wing nuts.
- b. To change the blades, simply remove the nuts, remove the previous used blade, install the next blade and secure with the wing nuts.

REMEMBER: The slicing blade is always the horizontal blade and the shredding blade is vertical. Installation of the blades in any other manner will result in the unit being non-functional. See figure #1 for reference.

3. Using the Gold Medal Spiral Slicer.

Adjust the stop collar to allow the drive plate pins to come close but not touch the cutting blades.

For Saratoga Swirls

Remove the shredding blade and slicer pin weldment. The slicing blade must be positioned to the high side of the blade mounting holes for proper cutting of Saratoga Swirls. If the Saratoga Swirls are not loading onto the skewer properly, check the slicing blade mounting and adjust it to its maximum height. The thin or medium slicing blades are recommended when making Saratoga Swirls. **CAUTION:** Be sure the adjustable set collar is positioned to prevent the drive plate from engaging the cutting blade.

- a. Cut about a ½ inch piece of the potato from one or both ends.
- b. Insert wood skewer into potato until it protrudes from opposite end of potato about ½ inch.
- c. Feed the long, empty portion of the skewer through the open slot next to the cutting blade.
- d. Place the short, half-inch end of the skewer protruding from the potato into the hole in the drive plate and firmly seat the potato onto the spikes of the drive plate.
- e. Move the potato and drive assembly toward the blades.
- f. Start rotating the crank arm of the manual slicer in a clockwise manner or press the two red buttons on the motorized slicer.
- g. Advance the potato towards the blade until it is fully engaged with the slicing blade.
- h. Firmly push and/or crank until the drive assembly reaches the set collar. This should leave a small slice of potato on the drive plate.

Adjustable Set Collar



For all other applications

- a. Cut about a 1/2 inch piece of the potato from each end.
- b. Firmly seat the potato (or other vegetable) on the drive plate.
- c. Move the potato and drive assembly toward the blades.
- d. Insert the center pin in to the potato. !! Do not bury the center pin, shredding blade or cutting blade into the potato. This will result in poor performance!!
- e. Start rotating the crank arm in a clockwise manner or start the motor.
- f. Slowly advance the crank arm, or power unit until the potato is fully engaged in the blade system being used.
- g. Firmly push and crank until potato is fully used.

4. *Gold Medal Spiral Slicer tips.*

- a. Always make sure the blades are firmly seated on the machine.
- b. Make sure any wing nuts that hold on the slicing blades are vertical.
- c. Do not push too hard. Push with a steady motion letting the machine and blades do the work.

5. Mounting Instructions For the Gold Medal Spiral Slicer

The Gold Medal 5280 and 5280M Spiral Slicers are capable of being mounted three different ways.

- a. Suction cup mounting:
Both models 5280 and 5280M are supplied with suction cups. This enables the units to be mounted to any smooth unpolished surface.
- b. Semi-permanent mounting plate:
The semi-permanent mounting angle comes attached to your slicer with two clamping knobs. To use this mounting system, remove the suction cups from the bottom of the unit, bolt the mounting angle to the the unit will be used on, and then reattach the unit to the mounting angle with the clamping knobs. See figure #2.
- c. Permanent mounting:
Both models 5280 and 5280M can be permanently mounted to any surface.
***Caution:** Permanent mounting of this machine may be in violation of health codes in your area and is not recommended. Check with your local health department before mounting.

Cleaning Instructions

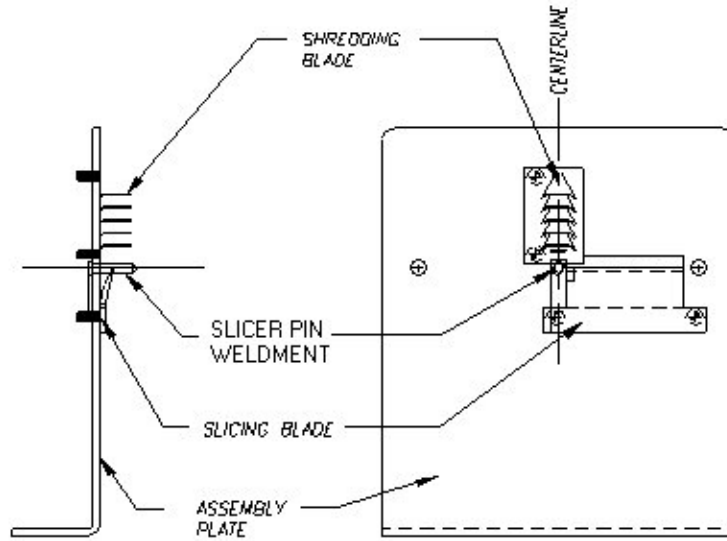
5280

1. Disassemble unit
2. Clean as needed
3. Reassemble unit

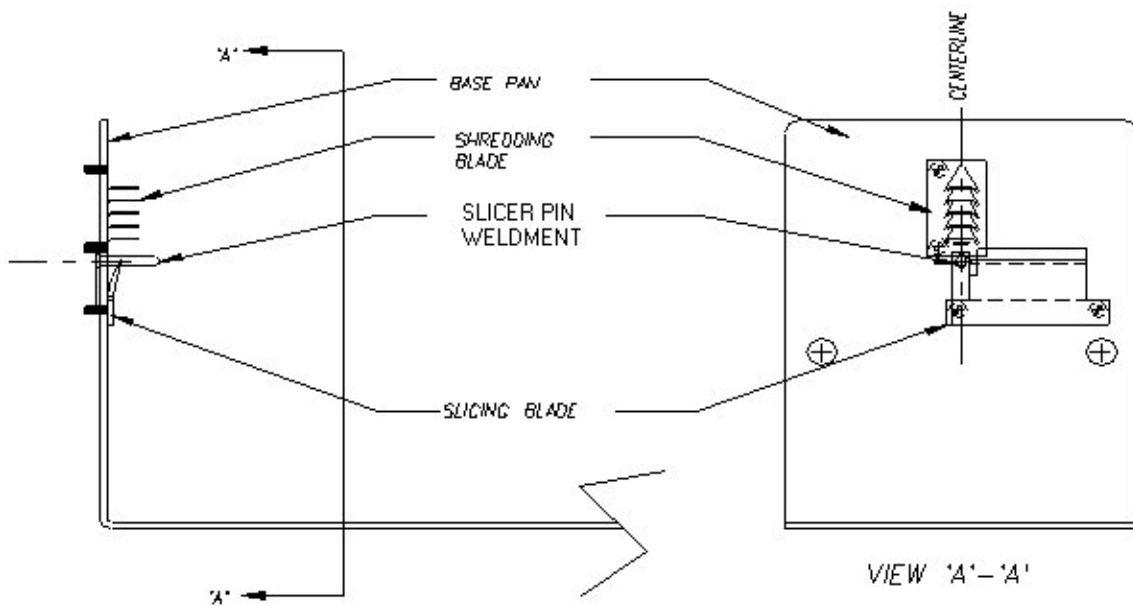
5280M (Motorized)

1. Unplug unit
2. Remove large wing nuts and carefully remove slides
3. Clean power unit with damp cloth
4. Clean base pan as needed
5. Reassemble unit.

	⚠ DANGER
	Machine must be properly grounded to prevent electrical shock to personnel. Do NOT immerse the equipment in water.
	Always unplug the equipment before cleaning or servicing.



5280



5280M

FIGURE #1

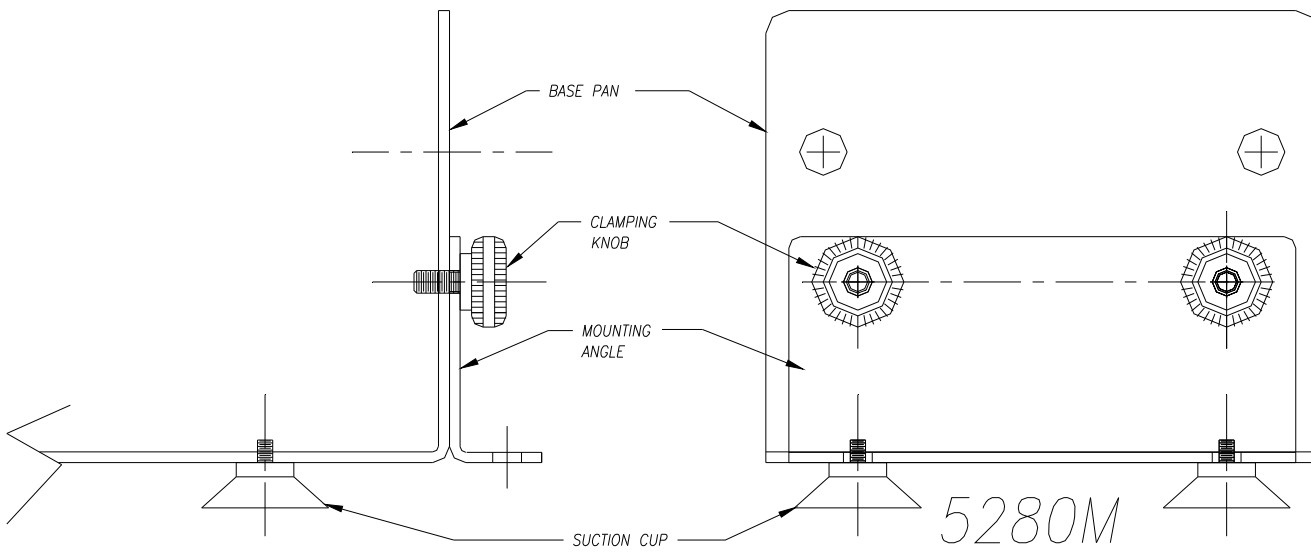
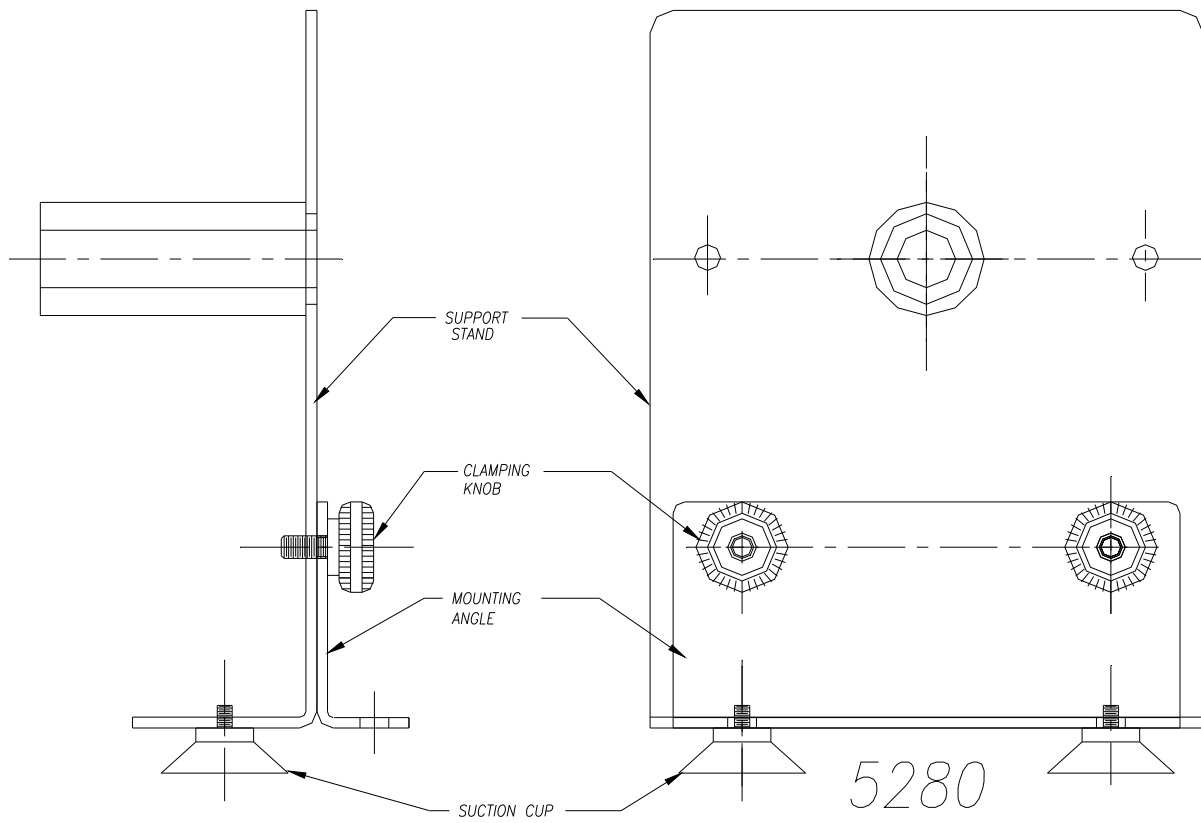


FIGURE #2

MAINTENANCE INSTRUCTIONS



DANGER

Do NOT immerse the equipment in water.
Unplug your machine before servicing.



WARNING

Adequate eye protection must be used when servicing this equipment to prevent the possibility of injury.



CAUTION

THE FOLLOWING SECTIONS OF THIS MANUAL ARE INTENDED ONLY FOR QUALIFIED SERVICE PERSONNEL WHO ARE FAMILIAR WITH ELECTRICAL EQUIPMENT. THESE ARE NOT INTENDED FOR THE OPERATOR.

ORDERING SPARE PARTS

1. Identify the needed part by checking it against the photos, illustrations, and/or the parts list.
2. When ordering, please include part number, part name, and quantity needed.
3. Please include your model name, serial number, and date of manufacture (located on the machine nameplate) with your order.
4. Address all parts orders to:

Parts Department
Gold Medal Products Co.
10700 Medallion Drive
Cincinnati, Ohio 45241-4807
(800) 543-0862
(513) 769-7676
Fax: (513) 769-8500

or, place orders at:

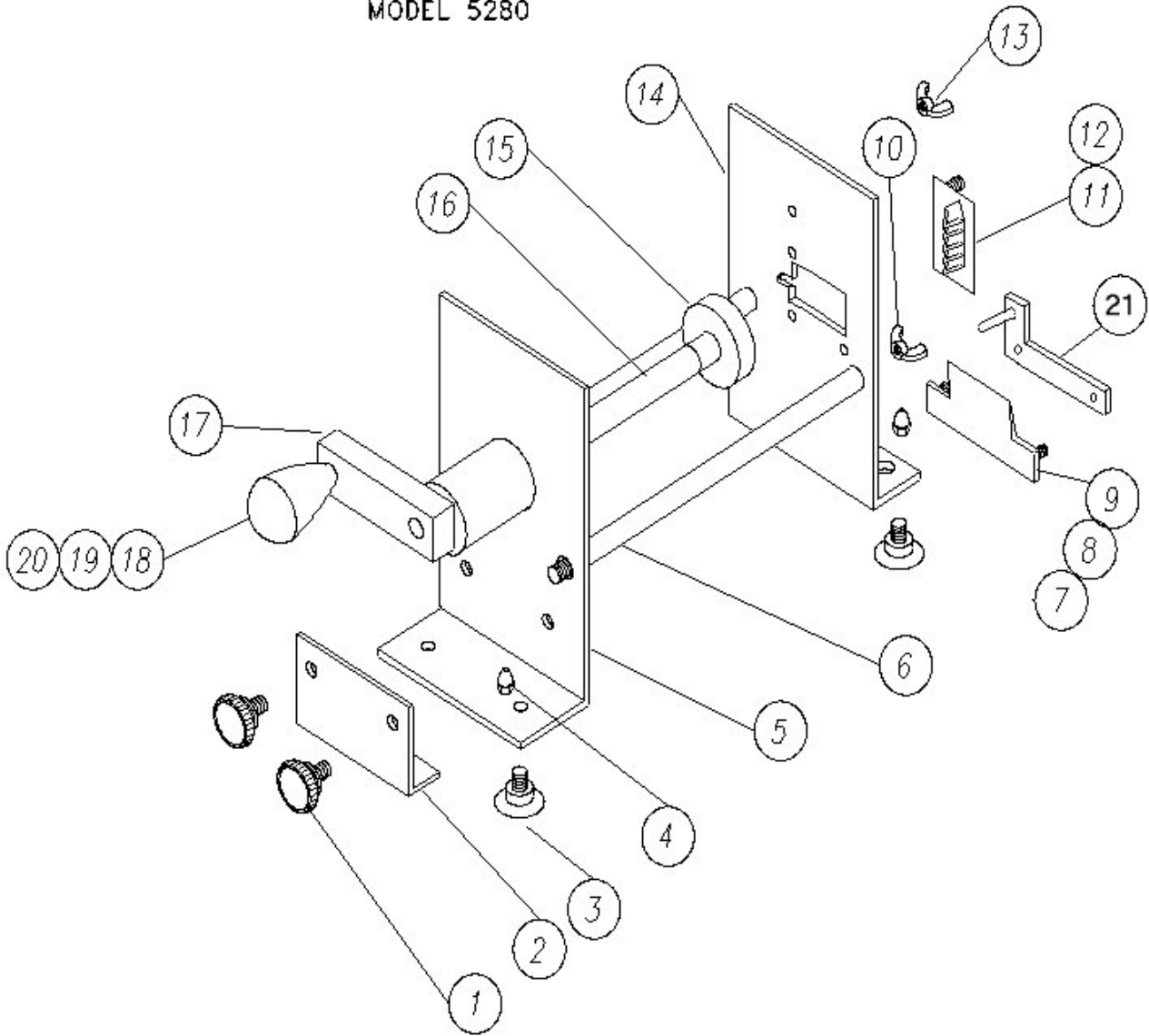
Web Page: www.gmpopcorn.com
www.dosze.com.co

Email : ventas@dosze.com.co

DOSZE
EQUIPMENT
WWW.DOSZE.COM.CO

5280 SPIRAL SLICER.

MODEL 5280

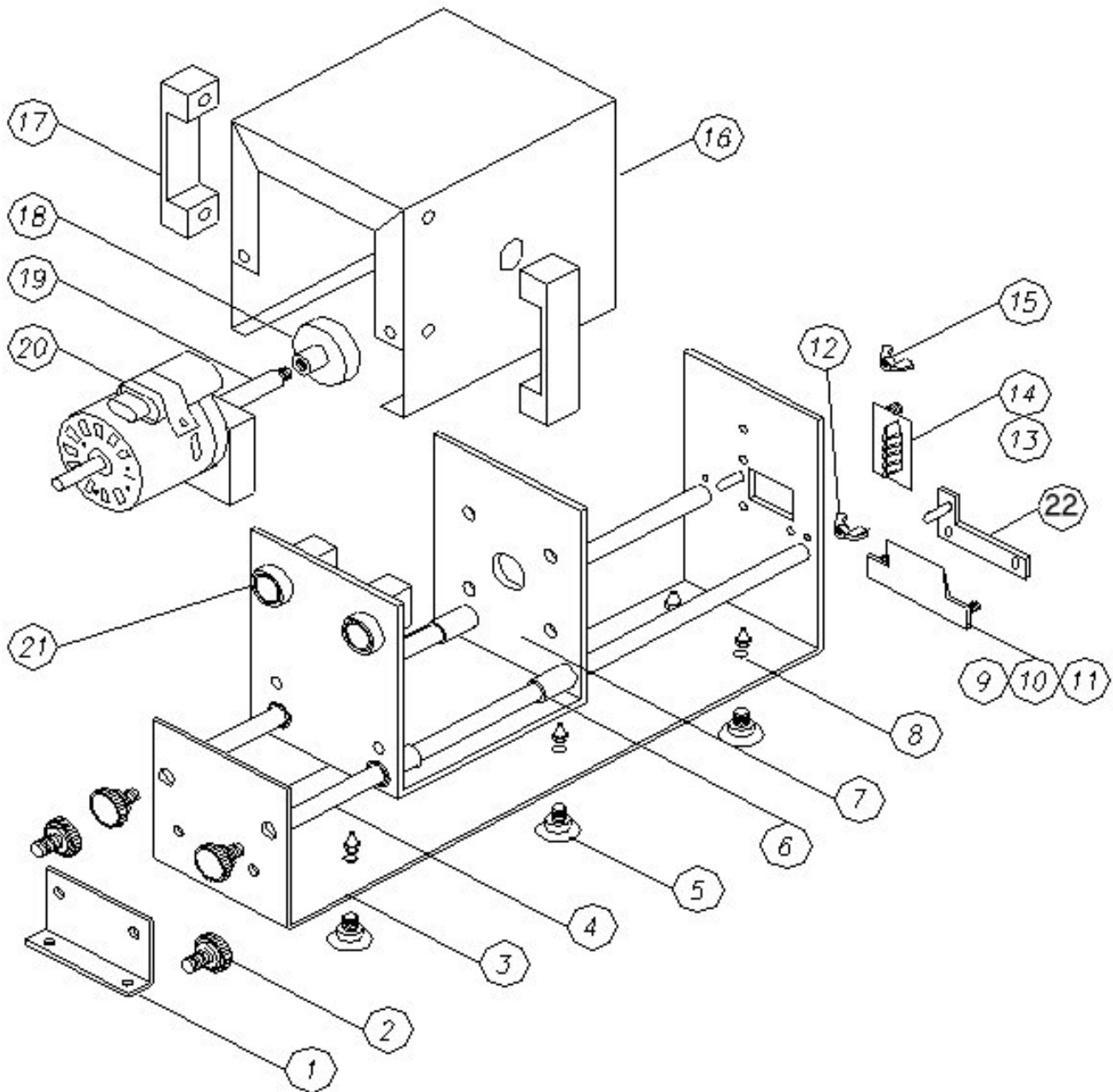


PARTS LIST – 5280 ASSEMBLY

Item No.	Part No.	Description	Quantity .
1	82864	Clamping knob	2
2	82859	Stop angle	1
3	44017	Suction cup feet	4
4	12385	Acorn nut	4
5	82810	Support stand weldment	1
6	82805	Front support rod	2
7	82827	Thin slicing blade weldment	1
8	82826	Medium slicing blade weldment	1
9	82825	Coarse slicing blade weldment	1
10	12466	¼-20 Wing nut	4
11	82818	Medium shred-blade weldment	1
12	82819	Coarse shred-blade weldment	1
13	89126	8-32 Wing nut	3
14	82820	Assembly plate weldment	1
15	82816	Drive plate	1
16	82811	Driver	1
17	82803	Crank arm	1
18	12368	Knob hand wheel	1
19	12369	Tube hand wheel pivot	1
20	12384	¼-20 x 2 Pan HD PH mach screw	1
21	82814	SLICER PIN WELDMENT	1

5280M MOTORIZED SPIRAL SLICER

5280M



PARTS LIST – 5280M ASSEMBLY

Item No.	Part No.	Description	Quantity
1	82859	Stop angle	1
2	82864	Clamping knob	4
3	82866	Base pan weldment	1
4	82861	Slide	2
5	44017	Suction cup feet	6
6	82863	Bushing	4
7	82861	Slide	1
8	12385	Acorn nut	6
9	82827	Thin slicing blade weldment	1
10	82826	Medium slicing blade weldment	1
11	82825	Coarse slicing blade weldment	1
12	12466	¼-20 Wing nut	2
13	82818	Medium shred-blade weldment	1
14	82219	Coarse shred-blade weldment	1
15	12385	8-32 Wing nut	4
16	82857	Motor cover	1
17	41098	Handle	1
18	82816	Drive plate	1
19	82860	Motor coupling	1
20	48225	Motor	1
21	38971	Momentary switch	2
22	82814	Slicer pin weldment	1

WARRANTY

WE WARRANT to the original purchaser the Gold Medal equipment sold by us to be free from defects in material or workmanship under normal use and service. Our obligation under this warranty shall be limited to the repair or replacement of any defective part for a period of six (6) months from the date of sale to the Original Purchaser with regard to labor and two (2) years with regard to parts and does not cover damage to the equipment caused by accident, alteration, improper use, voltage, abuse, or failure to follow instructions.

THIS WARRANTY IS IN LIEU OF ALL OTHER WARRANTIES EXPRESSED OR IMPLIED, AND OF ALL OTHER OBLIGATIONS OR LIABILITIES ON OUR PART, INCLUDING THE IMPLIED WARRANTY OF MERCHANTABILITY. THERE ARE NO WARRANTIES WHICH EXTEND BEYOND THE DESCRIPTION ON THE FACE HEREOF. We neither assume, nor authorize any other person to assume for us, any other obligation or liability in connection with the sale of said GOLD MEDAL equipment or any part thereof.

The term "Original Purchaser" as used in this warranty shall be deemed to mean that person, firm, association, or corporation who was billed by the GOLD MEDAL PRODUCTS COMPANY, or their authorized distributor for the equipment.

THIS WARRANTY HAS NO EFFECT AND IS VOID UNLESS THE ORIGINAL PURCHASER FIRST CALLS GOLD MEDAL PRODUCTS COMPANY AT 1-800-543-0862 TO DISCUSS WITH OUR SERVICE REPRESENTATIVE THE EQUIPMENT PROBLEM, AND, IF NECESSARY, FOR INSTRUCTIONS CONCERNING THE REPAIR OR REPLACEMENT OF PARTS.



GOLD MEDAL PRODUCTS COMPANY

10700 Medallion Drive

Cincinnati, Ohio 45241-4807 USA

www.gmpopcorn.com

Phone: 1-800-543-0862

Fax: 1-800-542-1496

Email: ventas@dosze.com.co

DOSZE
EQUIPMENT
WWW.DOSZE.COM.CO

© The text, descriptions, graphics and other material in this publication are the proprietary and exclusive property of Gold Medal Products Company and shall not be used, copied, reproduced, reprinted or published in any fashion, including website display, without its express written consent.